



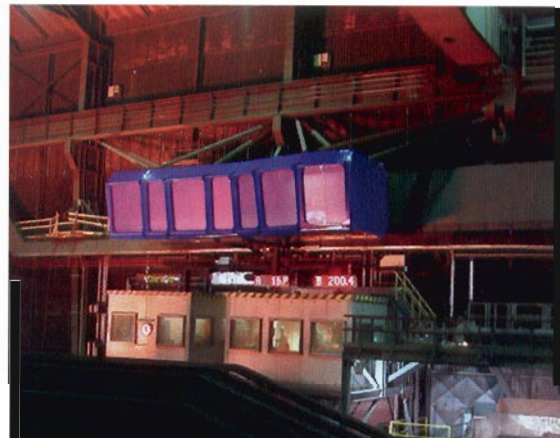
奧地利 奧鋼聯集團的參觀平台

# Visitor Platform Voestalpine Linz, Austria

卡羅米爾建築師事務所 Caramel architecten

建築師：Günter Katherl · Martin Haller · Ulrich  
Aspötsberger · Friedrich Stiper (Interior Designer)  
結構工程：Werkraum Wien  
施工單位：Voest Alpine Stahl GmbH  
空間性質：參觀平台  
業主：Voest Alpine Stahl GmbH  
各階面積：60 平方公尺  
空間面積：120 平方公尺  
建築面積：200 平方公尺  
基地面積：200,000 平方公尺 (Voestalpine Company)  
主要建材：鋼鐵、玻璃  
主要結構：鋼構  
座落位置：Linz Austria  
工程造价：歐元60萬元  
影像：Dietmar Tollerian, archipicture · @caramel  
採訪：劉湘怡  
文字：Caramel architecten

Architects：Günter Katherl · Martin Haller · Ulrich  
Aspötsberger · Friedrich Stiper (Interior Designer)  
Structural Engineering：Werkraum Wien  
Contractor：Voest Alpine Stahl GmbH  
Character of Space：Visitor Platform  
Client：Voest Alpine Stahl GmbH  
Each Floor Area：60 m<sup>2</sup>  
Total Floor Area：120 m<sup>2</sup>  
Building Area：200 m<sup>2</sup>  
Site Area：200,000 m<sup>2</sup> (Voestalpine Company)  
Principal Materials：Steel · Glass  
Principal Structure：Steel  
Location：Linz Austria  
Cost：0.6 mio €  
Photos：Dietmar Tollerian, archipicture · @caramel  
Interview：Rowena Liu  
Text：Caramel architecten



奧鋼聯集團 (Voestalpine Group) 曾經屬於奧地利的國營企業，他們已經試圖去擺脫污名，不要再讓人感覺他們獲利極低、缺乏彈性、只知從事商品生產，甚至污染環境。奧鋼聯集團徹底重組之後，早已躍升為奧地利工業界的標竿企業，積極於全球進行佈局。該集團不但製造高品質的鋼鐵，也進行後續加工，生產高品質的鋼鐵產品；此外，他們也加工處理別種材質。環境保護已經納入他們的企業理念。

為了讓來訪的學生或企業夥伴「實際」體驗廠房的運作過程，奧鋼聯集團廣邀競圖，以便設計與生產可在所有廠房安裝的參觀平台。卡羅米爾建築師事務所 (Caramel architecten) 提出的設計案最終勝出。他們發展出標準模組，將其當作每個參觀平台的基本組裝單位。模組的形體對稱，自由組裝後便可調整參觀平台的大小與形狀，以符合不同的場所需求，讓訪客享有最佳的視野。

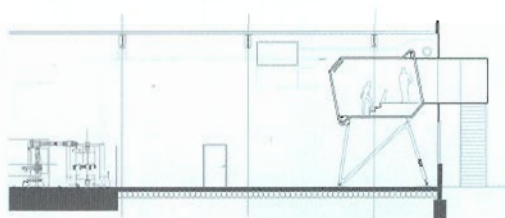
標準尺寸的預製模組可輕易以卡車載運，現場組裝後便可建構出與公司標誌同款顏色的參觀平台，然後裝在選定的場所 (從地板固定或者從上方懸吊)。每個參觀平台皆可設置坐階或站階 (搭配間接燈光)，不僅可同時容納數排參觀者，後排人士的視野也不會有任何阻礙。牆壁上平面螢幕的簡報結束之後，原本無光澤的玻璃面板會轉成透明，讓參觀者可直接看到周圍正在進行的作業。

Formerly part of Austria's nationalized industries, the Voestalpine Group had to struggle for some time to shake off the image of the past that was associated with low profitability, lack of flexibility, commodity production and damage to the environment. Following a thorough restructuring process, Voestalpine turned into one of Austria's leading industrial enterprises with extensive international activities. In addition to making high-quality steel, Voestalpine now also engages in downstream processing and manufacture of finished high-quality steel products, as well as processing of other materials. Environmental protection has become part of the company's philosophy.

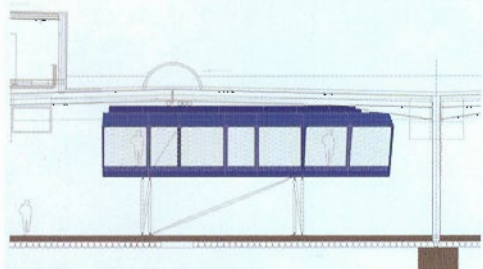
With a view to giving visitors - from school children to business partners - some "hands-on" experience of the activities in the company's plants, Voestalpine has invited tenders for the development and production of visitor platforms that will be capable of installation in all its plants. The winning proposal was submitted by Caramel. Caramel has developed a standard module that serves as the basic building block for each platform. The modules are symmetrical in shape and can be freely combined to adjust the size and shape of individual platforms to the local requirements and provide the desired perspectives for visitors. The prefabricated, standard-size modules can be easily transported by lorry and assembled on site. The platforms, which are in the colours of the company logo, are then placed (floor-mounted or suspended from above) at the selected locations.

Each module may be fitted with stepped-level sitting/standing space (with indirect lighting) to accommodate several rows of visitors and ensure an equally full view for those in the back. After a presentation via a wall-mounted flat screen, the glass panels are switched from matte to clear, and visitors can look directly at the work processes going on around them.

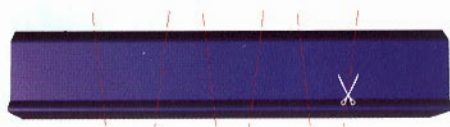




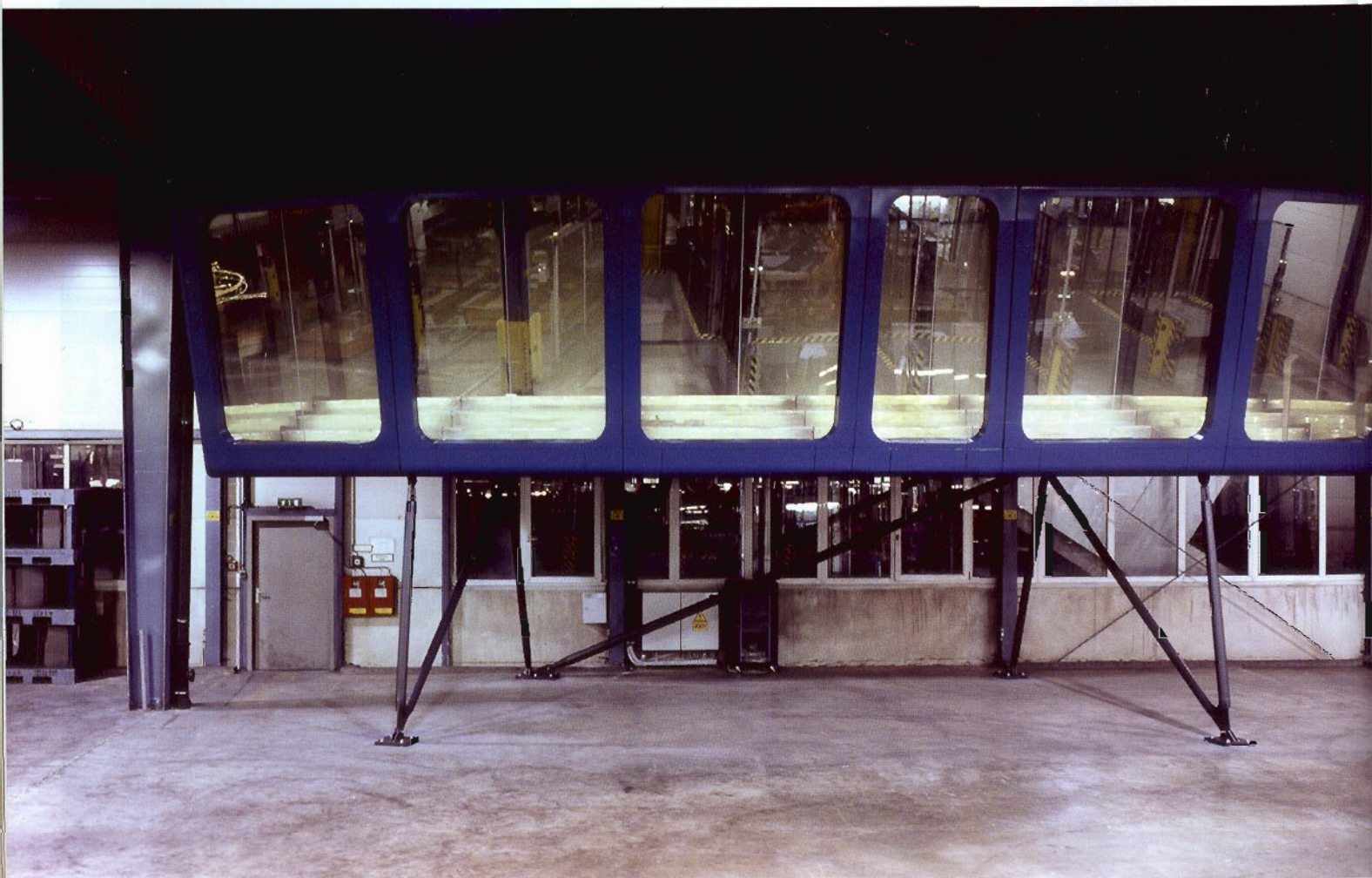
剖立面圖 SECTION



正立面圖 FRONT ELEVATION



元素構成示意圖 ELEMENT PRODUCTION



左頁·右頁：簡報結束之後，原本無光澤的玻璃面板會轉成透明，讓參觀者可直接看到周圍正在進行的作業  
右頁上圖：牆壁上設有平面螢幕可以針對工廠的狀態作簡報

